



Aide AD-P30 Seagull driver

Installation Manual

2021 version





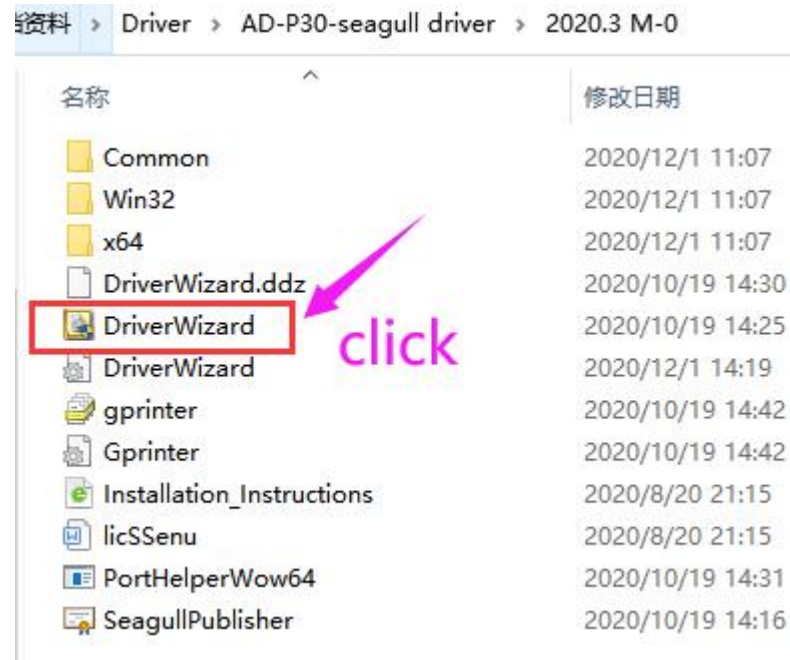
01

Install the Printer Driver



1

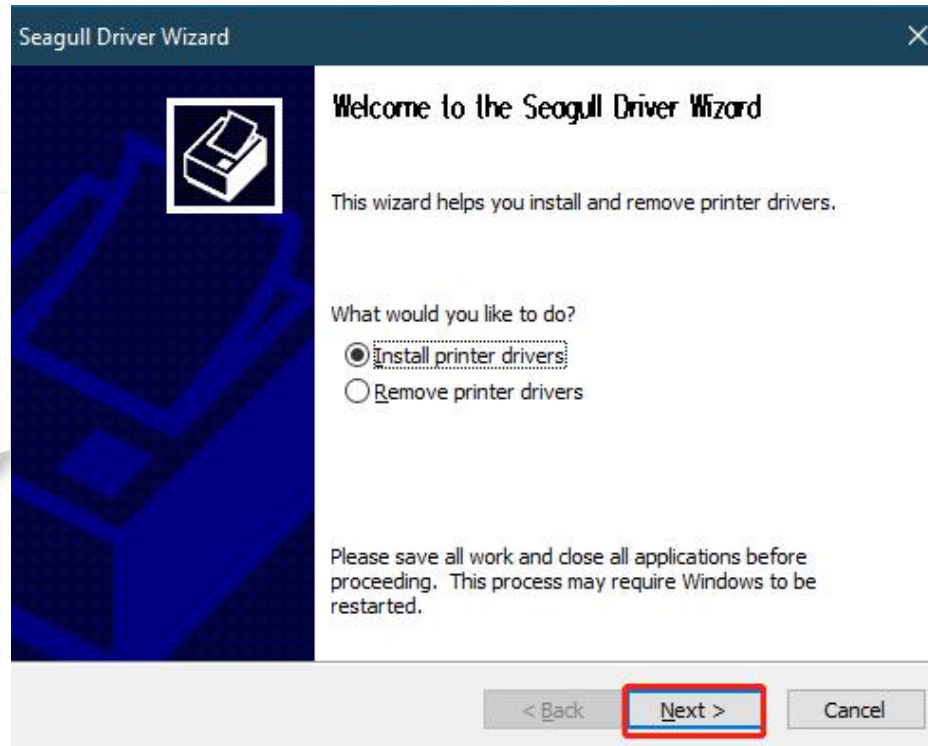
Connect the printer to the computer, turn on the power, double-click “**DriverWizard**”, and run the installation program





2

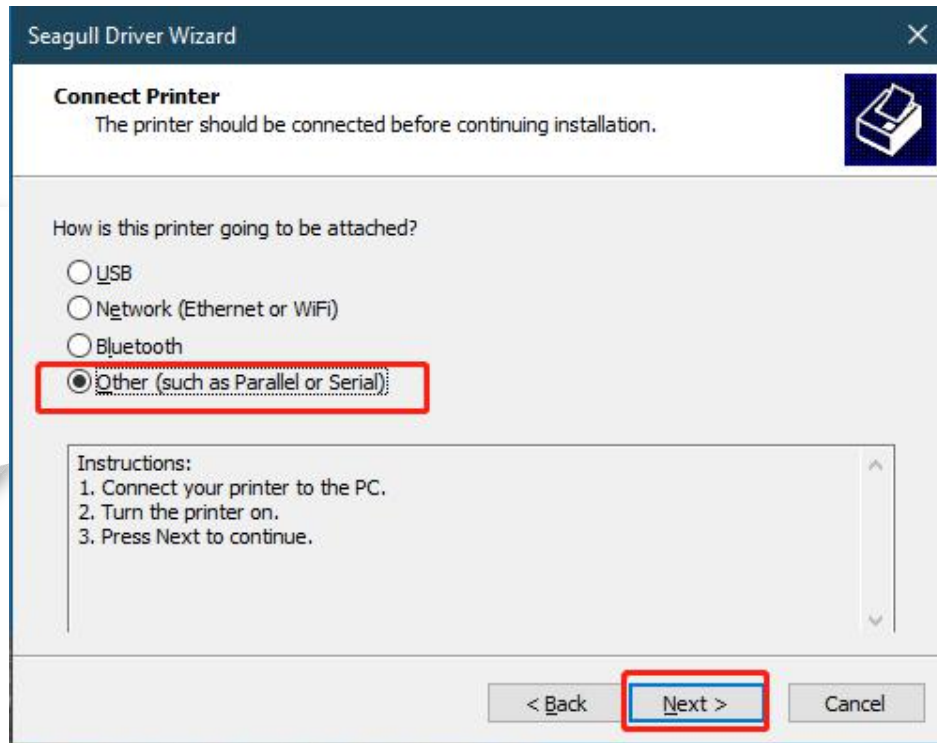
At this time, there will be a hardware installation wizard prompt, select "Install printer software" and click "Next"





3

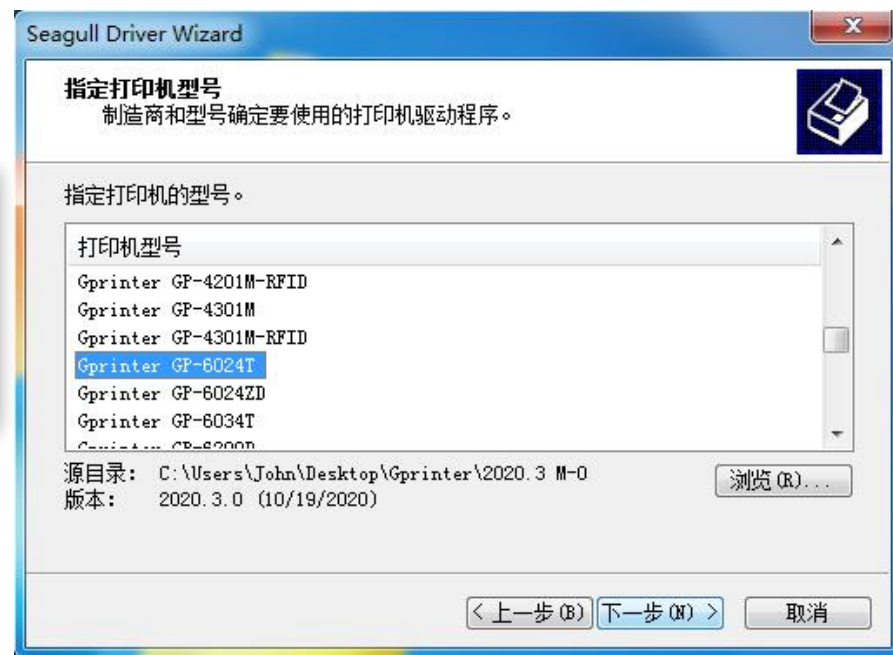
The system will automatically detect the device to be installed, click on the "Other" option as shown below





4

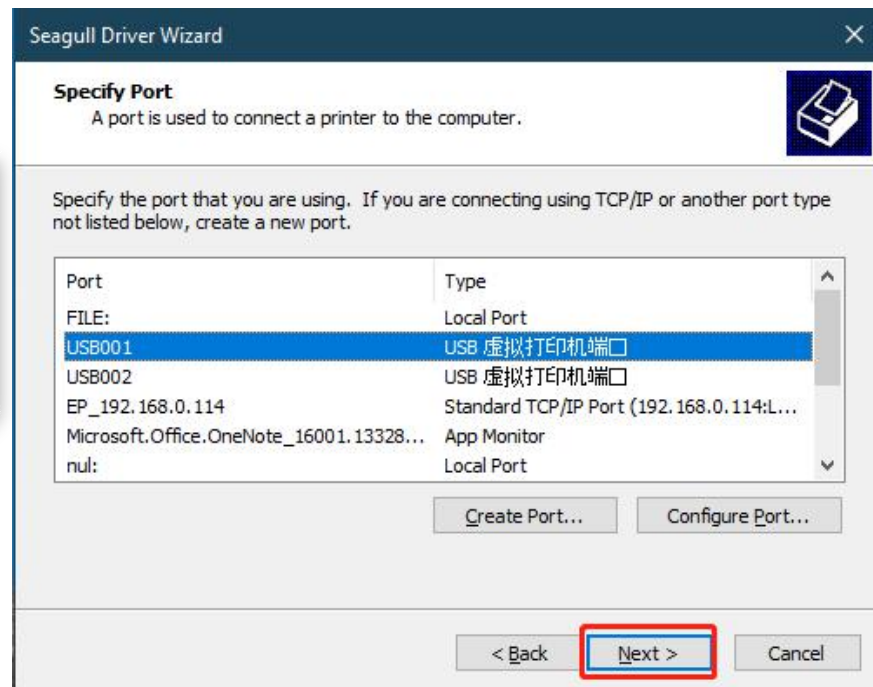
Select the specified printer model Gprinter GP-6024T, and click "Next"





5

Select the designated port "USB001", continue to click "Next"





6

Name the printer name in the pop-up window, and set other options as needed, click "Next"

Seagull Driver Wizard

Specify Printer Name
Names are used to identify the printer on this computer and on the network.

Enter a name for this printer.

Printer name:

Use this printer as the default printer

Specify whether or not you want to share this printer with other network users. When sharing, you must provide a share name.

Do not share this printer

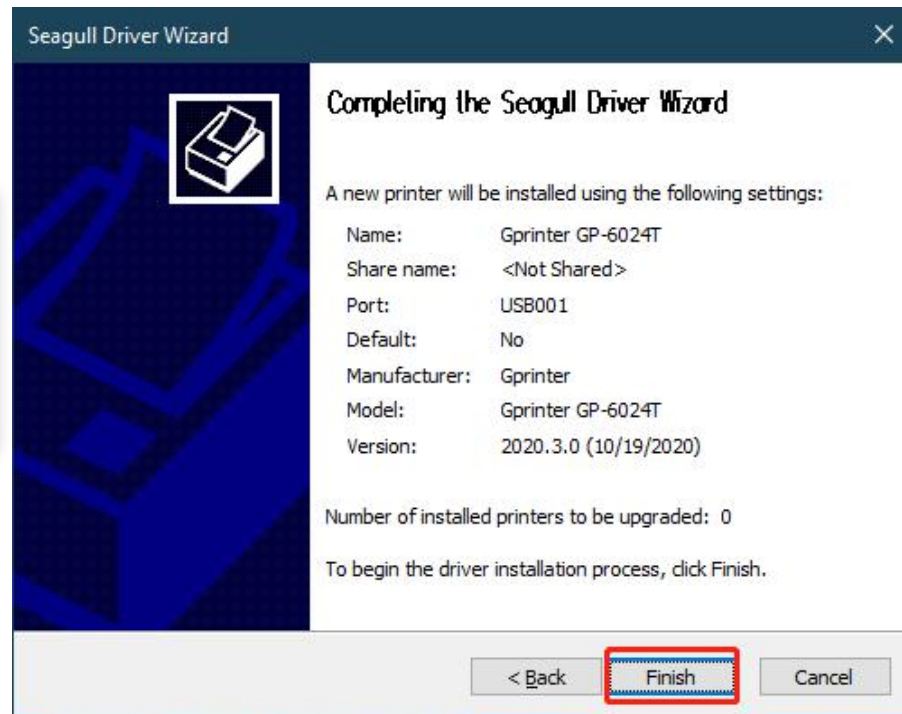
Share name:

< Back **Next >** Cancel



7

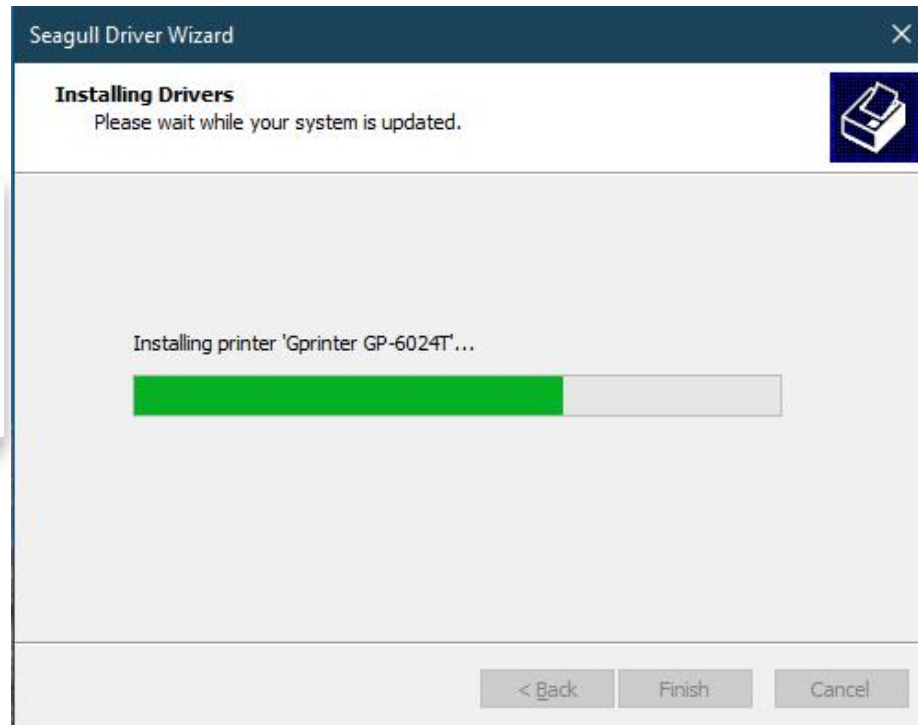
Click Finish in the pop-up window to start the installation of the program





8

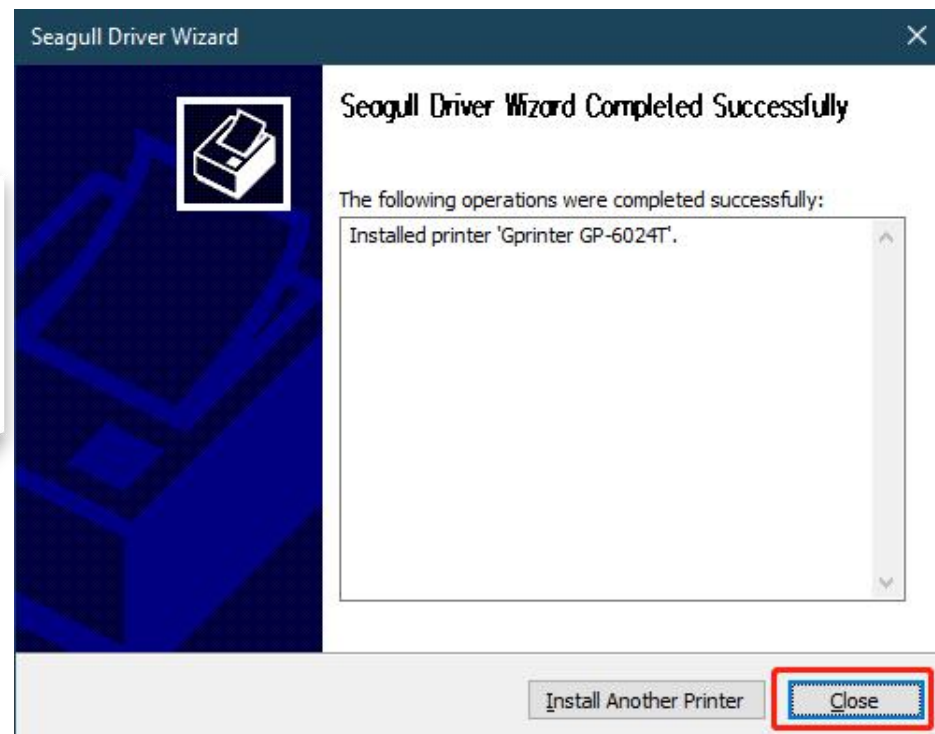
Waiting





8

After the installation is complete,
click "Close"





02

Set Printer Preferences



1

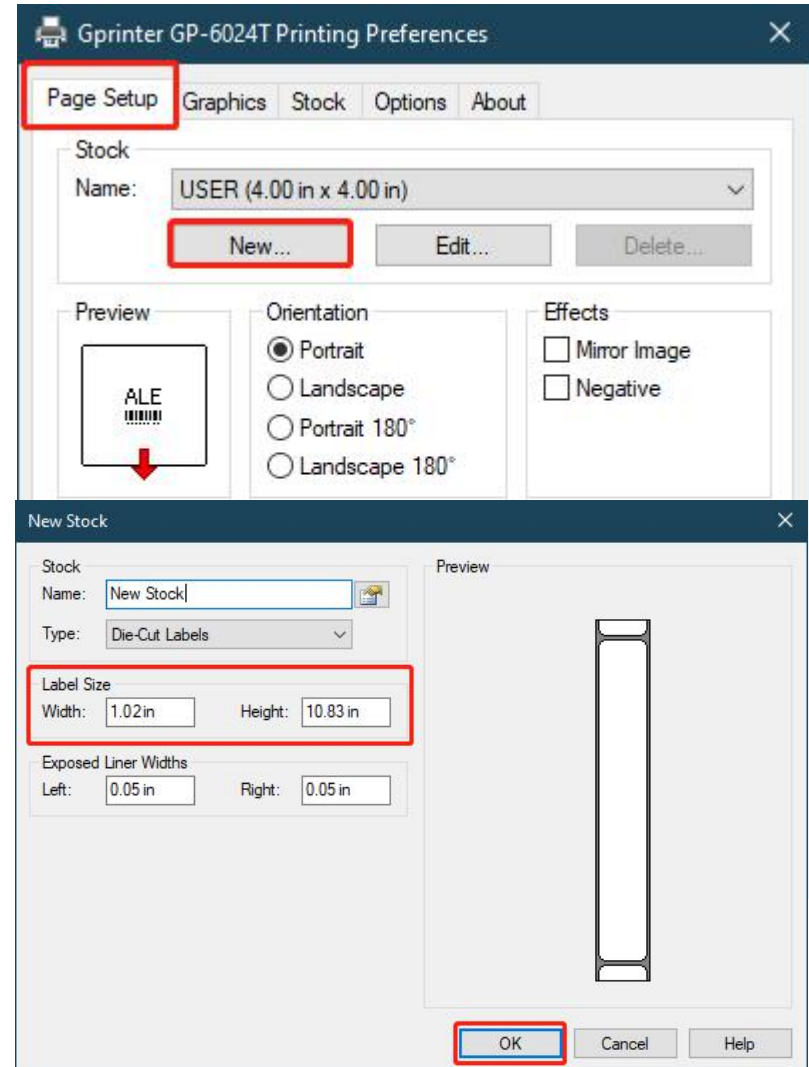
In "Start-Control Panel-Printers and Faxes", you can see the printer driver just installed, right-click the program icon, and select "Printing Preferences"





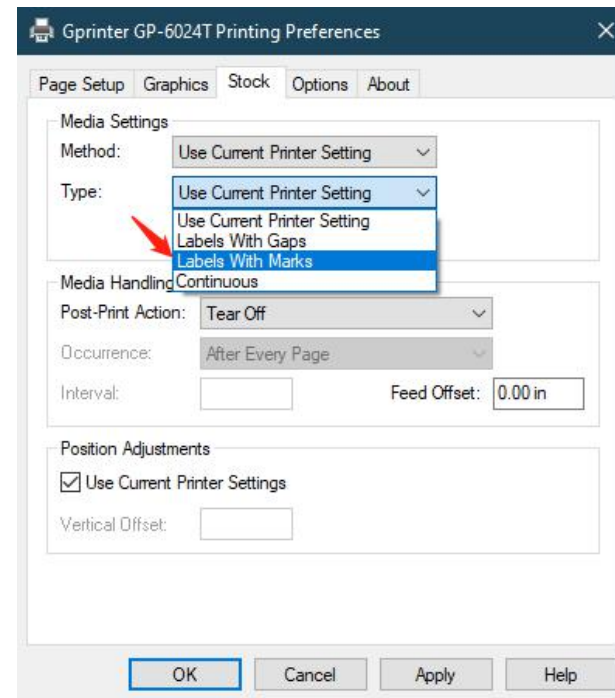
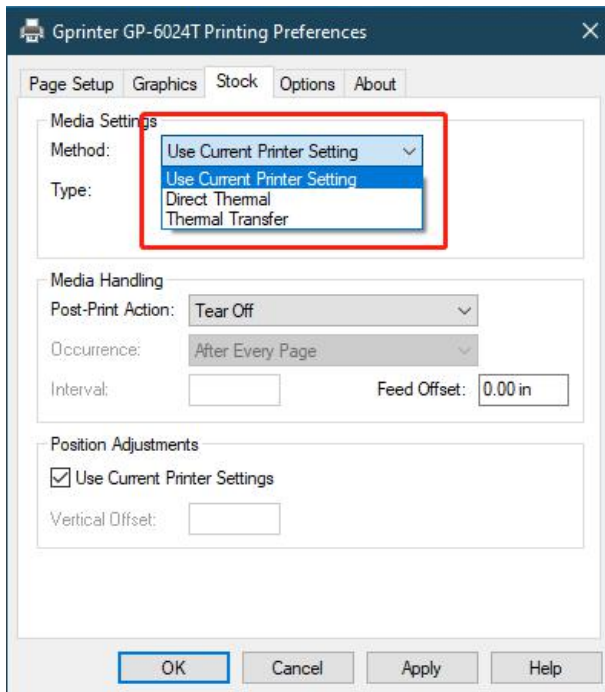
2

In the pop-up window, select "Page Setup", click "New", edit the length and width of the wristband on the edit page (the size of the ZT10 series is 26mm*275mm), set the left and right width to 1.3mm, and click OK





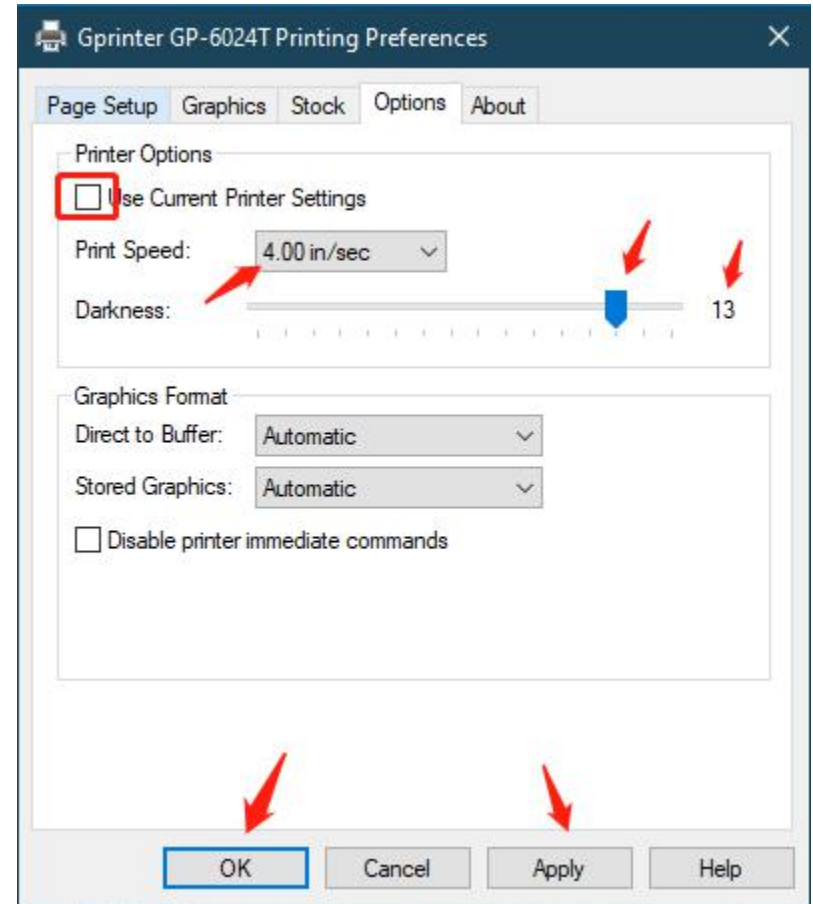
3 Switch to the Stock option, select the printing Method as "Direct thermal", the Type as "Label With Marks " (some driver versions are displayed as marks), and then click "Apply"





4

In the "Options" column, you can adjust the printing speed and depth (recommended speed is 4.00in/sec, depth 10), then click "Apply", and finally click "OK" to complete the preference setting



Thanks

Aide Technology (Guangdong) Co., Ltd.

Guangzhou Aide Medical Technology Co., Ltd.

www.aidegroup.cn

www.aidemed.cn